



DYNAMAXX

TIRE CATALOG





OTR TIRES:

- 4 HSS ROAD+
- 5 EARTH GRIP+
- 6 WINTER GRIP+
- 7 OMNI GRIP+
- 8 ALL GRIP+
- 9 HAULER GRIP
- 10 ALL TRACTION+
- 11 LUG TRAC
- 12 UGM SLICK
- 13 POWER MAXX+
- 14 POWER MAXX+ HD

CONSTRUCTION TIRES:

- 15 SUPER SKID
- 16 SUPER SKID+
- 17 SUPER SKID+ HD
- 18 PAVE MAXX+
- 19 PAC MAXX+

AGRICULTURAL TIRES:

- 20 SOIL TECH ELITE R1-W
- 21 IMP MAXX+
- 22 IMP GRIP+



HSS ROAD+

The HSS Road+ provides excellent stability and traction with a heat-resistant undertread compound for high-speed mobile cranes. DOT marked and F-speed rated for highway use.

Engineered for:
Mobile Cranes



Size	Rating	Type	Rim	O.D.	S.W	T.D.	Infl. P.	L.C.C. (lbs/kg)	Infl. P.
				in	in	32nds	psi	50 mph	
				mm	mm	mm	KPa	80 kph	
14.00R24 (385/95R24)	***	TL	10.00W	53.7	15.2	30	130	13200	170F
				1364	386	24	900	6000	
14.00R25 (385/95R25)	***	TL	9.50/1.7 CR 10.00/1.5	53.7	15.2	30	130	13200	170F
				1364	386	24	900	6000	
16.00R25 (445/95R25)	***	TL	11.00/1.7 CR 11.25/2.0	58.4	17.3	35	130	14800	174F
				1483	439	28	900	6700	





EARTH GRIP+

The Earth Grip+ non-directional pattern is designed to maximize traction in soft underfoot conditions. This all-steel radial tire construction maximizes traction and flotation.

Engineered for:
 Graders \ Loaders \ Earthmovers



Size	Rating	Type	Rim	O.D.	S.W	T.D.	Infl. P.	L.C.C. (lbs/ kg)	L.I.
				in	in	32nds	psi	25 mph	
				mm	mm	mm	KPa	40 kph	
14.00R24	*	TL	10.00VA	53.7	14.8	31	54	8050	175A2/153A8
				1363	376	25	375	3650	



E2/G2/L2



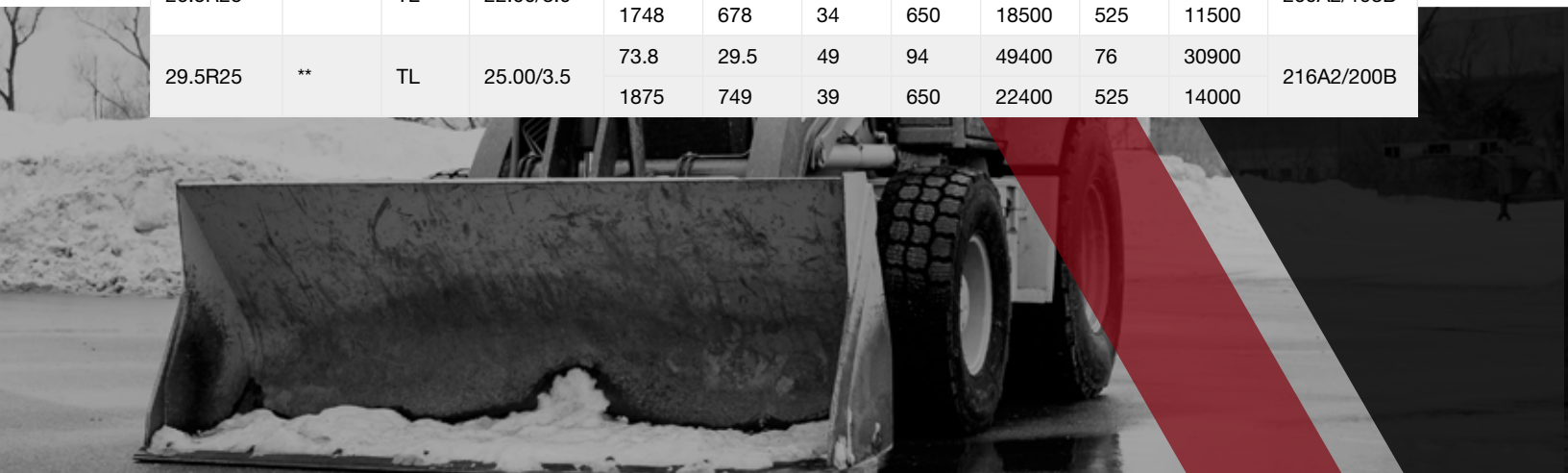
WINTER GRIP+

The Winter Grip+ is a purpose-built tire for use on graders and loaders where superior traction on snow and ice is required. It features a wide profile and an aggressive all-season tread design for use year-round.

Engineered for:
Loaders / Dump Trucks / Graders



Size	Rating	Type	Rim	O.D.	S.W	T.D.	Infl. P.	L.C.C. (lbs/kg)	Infl. P.	L.C.C. (lbs/kg)	L.I.
				in	in	32nds	psi	5 mph	psi	30 mph	
				mm	mm	mm	KPa	10 kph	KPa	50 kph	
14.00R24	*	TL	10.00	53.5	15.3	29	80	15200	69	9100	175A2/157B
				1359	389	23	550	6900	475	4125	
17.5R25	**	TL	14.00/1.5	52.7	17.7	35	94	18700	76	12000	182A2/167B
				1339	450	28	650	8500	525	5450	
20.5R25	**	TL	17.00/2.0	58.7	20.3	38	94	25400	76	16100	193A2/177B
				1491	516	30	650	11500	525	7300	
23.5R25	**	TL	19.50/2.5	63.5	23.5	41	94	32000	76	20400	201A2/185B
				1613	597	33	650	14500	525	9250	
26.5R25	**	TL	22.00/3.0	68.8	26.7	43	94	40800	76	25400	209A2/193B
				1748	678	34	650	18500	525	11500	
29.5R25	**	TL	25.00/3.5	73.8	29.5	49	94	49400	76	30900	216A2/200B
				1875	749	39	650	22400	525	14000	



E3/L3



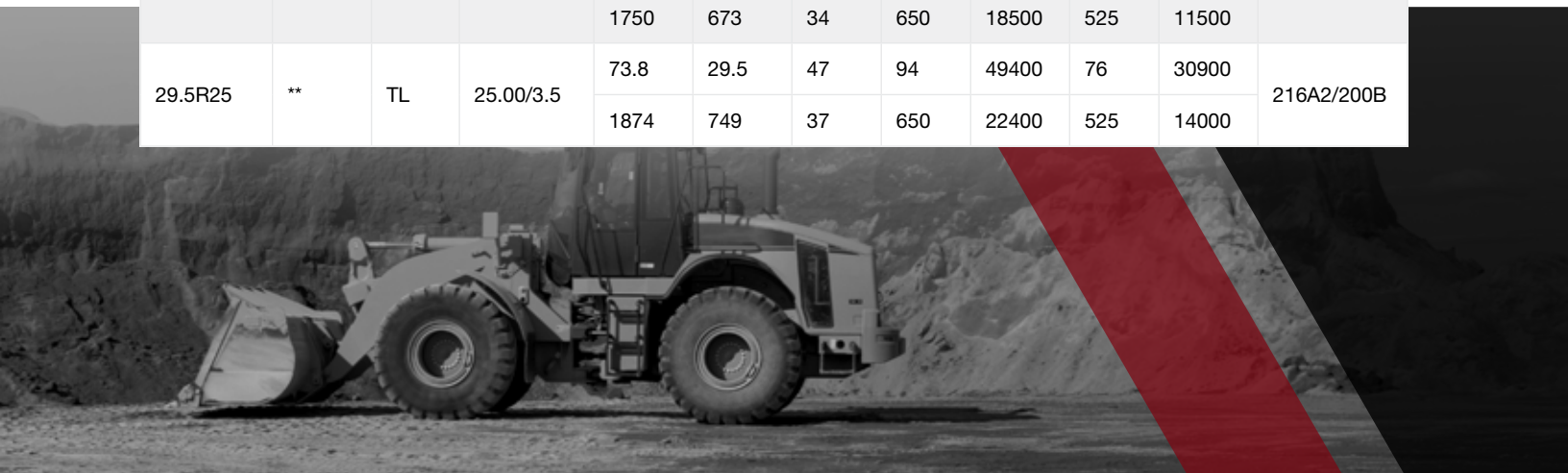
OMNI GRIP+

Standard E3/L3 rock lug pattern combines excellent traction and high resistance to wear and cutting. Excellent traction in all off-road conditions. Thick undertread for improved puncture resistance. High quality carcass allows for excellent retreadability. Wear and cut resistant tread compound.

Engineered for:
Loaders \ Dump Trucks \ Graders



Size	Rating	Type	Rim	O.D.	S.W	T.D.	Infl. P.	L.C.C. (lbs/kg)	Infl. P.	L.C.C. (lbs/kg)	L.I.
				in	in	32nds	psi	5 mph	psi	30 mph	
				mm	mm	mm	KPa	10 kph	KPa	50 mph	
17.5R25	**	TL	14.00/1.5	53.1	17.5	32	94	18700	76	12000	182A2/167B
				1349	444	25	650	8500	525	5450	
20.5R25	**	TL	17.00/2.0	58.8	20.5	35	94	25400	76	16100	193A2/177B
				1493	521	28	650	11500	525	7300	
23.5R25	**	TL	19.50/2.5	63.3	23.5	39	94	32000	76	20400	201A2/185B
				1608	597	31	650	14500	525	9250	
26.5R25	**	TL	22.00/3.0	68.9	26.5	43	94	40800	76	25400	209A2/193B
				1750	673	34	650	18500	525	11500	
29.5R25	**	TL	25.00/3.5	73.8	29.5	47	94	49400	76	30900	216A2/200B
				1874	749	37	650	22400	525	14000	



E3/L3



ALL GRIP+

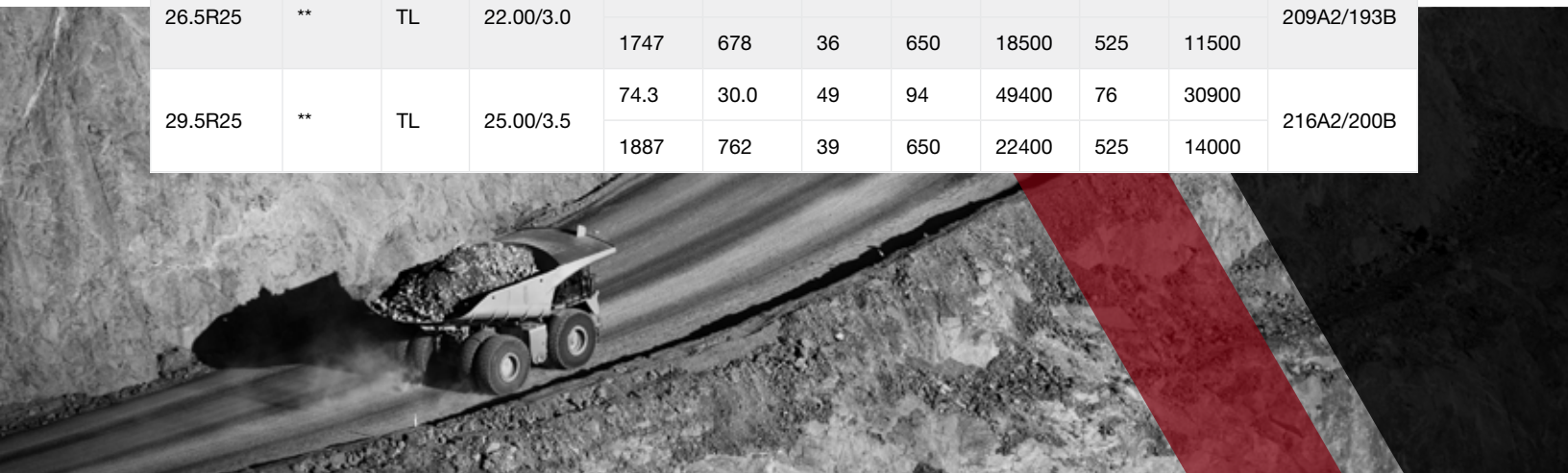
Standard E3/L3 rock lug pattern combines excellent traction and high resistance to wear and cutting. Excellent traction in all off-road conditions. Thick undertread for improved puncture resistance. High quality carcass allows for excellent retreadability. Wear and cut resistant tread compound. Wide, flat footprint profile for maximum stability and wear. Increased net-to-gross for improved tread life.

Engineered for:

Loaders \ Dump Trucks \ Graders



Size	Rating	Type	Rim	O.D.	S.W	T.D.	Infl. P.	L.C.C. (lbs/kg)	Infl. P.	L.C.C. (lbs/kg)	L.I.
				in	in	32nds	psi	5 mph	psi	30 mph	
				mm	mm	mm	KPa	10 kph	KPa	50 mph	
17.5R25	**	TL	14.00/1.5	52.7	17.7	35	94	18700	76	12000	182A2/167B
				1338	450	28	650	8500	525	5450	
20.5R25	**	TL	17.00/2.0	59.0	20.4	38	94	25400	76	16100	193A2/177B
				1498	518	30	650	11500	525	7300	
23.5R25	**	TL	19.50/2.5	63.4	23.9	42	94	32000	76	20400	201A2/185B
				1610	607	33	650	14500	525	9250	
26.5R25	**	TL	22.00/3.0	68.8	26.7	45	94	40800	76	25400	209A2/193B
				1747	678	36	650	18500	525	11500	
29.5R25	**	TL	25.00/3.5	74.3	30.0	49	94	49400	76	30900	216A2/200B
				1887	762	39	650	22400	525	14000	



E4/L4



HAULER GRIP

Deep E4/L4 lug pattern combines excellent traction and high resistance to wear and cutting. Specifically designed to minimize vibration at haul speeds and provides the lowest cost-per-hour. Excellent traction in all off-road conditions. Deep undertread for improved puncture resistance. High quality carcass allows for excellent retreadability. Wear and cut resistant tread compound. Wide, flat footprint profile for maximum stability and wear.

Engineered for:
Loaders \ Dump Trucks



Size	Rating	Type	Rim	O.D.	S.W	T.D.	Infl. P.	L.C.C.	Infl. P.	L.C.C.	T.D.	Infl. P.	L.I.
				in	in	32nds	psi	5 mph	psi	30 mph	32nds	psi	
				mm	mm	mm	KPa	10 kph	KPa	50 mph	mm	KPa	
23.5R25	**	TL	19.50/2.5	65.2	23.7	66	Standard	148	94	32000	76	20400	201A2/ 185B
				1656	602	52	Cut Resistant	100	650	14500	525	9250	
26.5R25	**	TL	22.00/3.0	69.9	26.7	70	Standard	173	94	40800	76	25400	209A2/ 193B
				1775	678	56	Cut Resistant	113	650	18500	525	11500	
29.5R25	**	TL	25.00/3.5	75.1	30.0	75	Standard	186	94	49400	76	30900	216A2 /200B
				1907	762	60	Cut Resistant	134	650	22400	525	14000	



E4



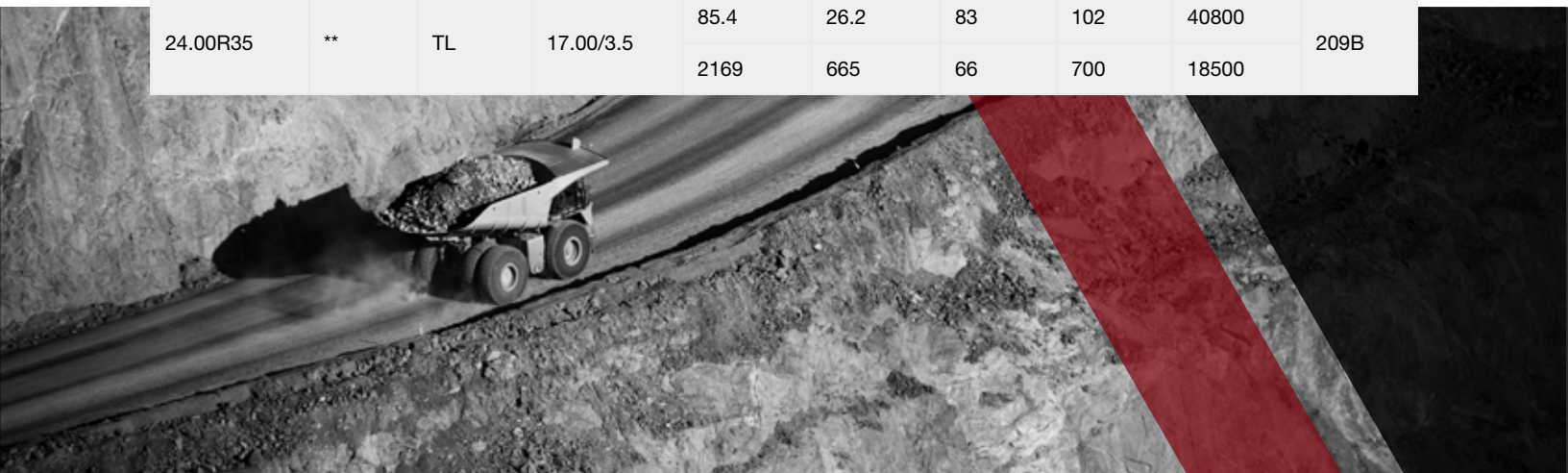
ALL TRACTION+

The All Traction+ E4 is a specially designed haulage tire for maximum traction and long, even wear.

Engineered for:
Dump Trucks



Size	Rating	Type	Rim	O.D.	S.W	T.D.	Inf. P.	L.C.C.	L.I.
				in	in	32nds	psi	30 mph	
				mm	mm	mm	KPa	50 kph	
14.00R24	***	TL	10.00W	55.1	15.6	45	109	12800	169B
				1400	396	36	750	5800	
14.00R25	***	TL	10.00/1.5	55.1	15.6	45	109	12800	169B
				1400	396	36	750	5800	
18.00R33	**	TL	13.00/2.5	73.6	20.3	66	102	24000	191B
				1869	516	52	700	10900	
24.00R35	**	TL	17.00/3.5	85.4	26.2	83	102	40800	209B
				2169	665	66	700	18500	



L5



LUG TRAC

Extra deep L5 offset lug pattern combines excellent traction and high resistance to wear and cutting. Specifically designed to maximize service life in the harshest applications. Excellent traction in all off-road conditions. Deep undertread for improved puncture resistance. Reinforced bead, shoulder and sidewall. Specialized mining compound for increased cut and impact resistance.

Engineered for:
Underground Mining \ Loaders



Size	Rating	Type	Rim	O.D.	S.W	T.D.	Infl. P.	L.C.C. (lbs/kg)	L.I.
				in	in	32nds	psi	5 mph	
				mm	mm	mm	KPa	10 kph	
17.5R25	**	TL	14.00/1.5	54.9	17.5	83	94	18700	182A2
				1394	444	66	650	8500	
20.5R25	**	TL	17.00/2.0	60.9	20.9	90	94	25400	193A2
				1547	531	71	650	11500	
23.5R25	**	TL	19.50/2.5	65.6	23.8	98	94	32000	201A2
				1666	604	78	650	14500	
26.5R25	**	TL	22.00/3.0	70.9	26.9	110	94	40800	209A2
				1801	683	87	650	18500	
29.5R25	**	TL	25.00/3.5	75.6	30.6	118	94	49400	216A2
				1920	777	94	650	22400	
29.5R29	**	TL	25.00/3.5	79.1	31.5	125	94	52000	218A2
				2009	800	99	650	23600	
35/65R33	**	TL	28.00/3.5	82.1	36.0	120	94	61500	224A2
				2085	914	95	650	28000	

L5S



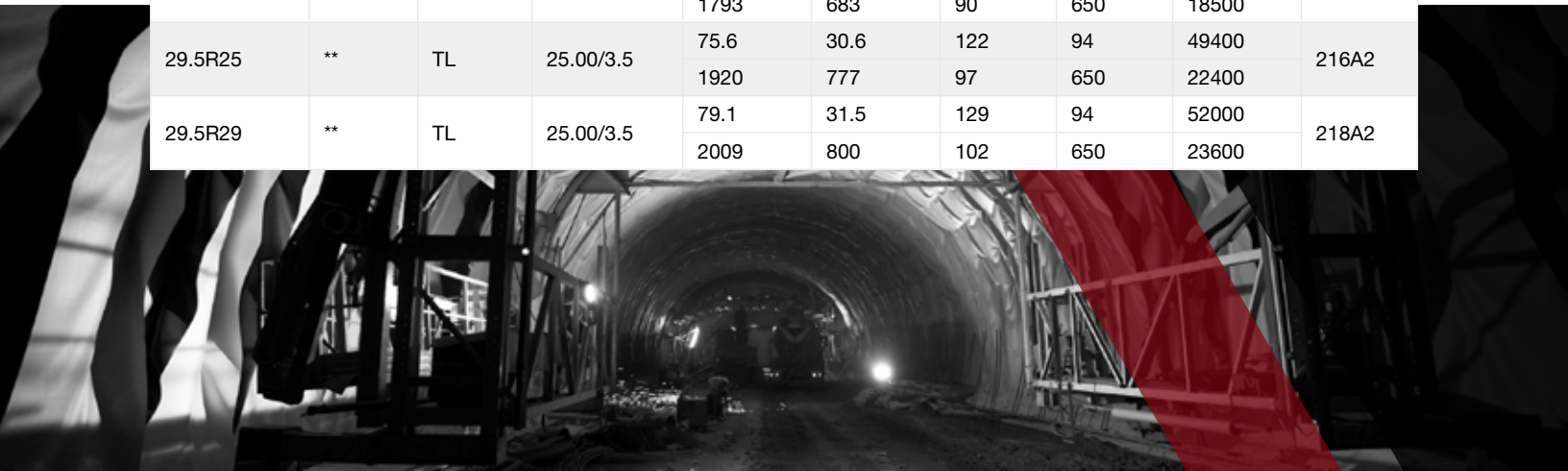
UGM SLICK

Extra deep L5S design provides highest resistance to wear and cutting. Specifically designed to maximize service life in the harshest applications. Extra deep, smooth tread provides longest tire life and lowest cost-per-hour. Deep undertread for improved puncture resistance. Reinforced bead, shoulder and sidewall. Specialized mining compound for increased cut and impact resistance.

Engineered for:
Underground Mining \ Loaders



Size	Rating	Type	Rim	O.D.	S.W	T.D.	Infl. P.	L.C.C. (lbs/kg)	L.I.
				in	in	32nds	psi	5 mph	
				mm	mm	mm	KPa	10 kph	
18.00R25	**	TL	13.00/2.5	65.7	20.1	110	120	35300	204A2
				1668	510	87	825	16000	
17.5R25	**	TL	14.00/1.5	54.9	17.5	86	94	18700	182A2
				1394	444	68	650	8500	
20.5R25	**	TL	17.00/2.0	60.9	20.9	93	94	25400	193A2
				1547	531	74	650	11500	
23.5R25	**	TL	19.50/2.5	65.6	23.8	101	94	32000	201A2
				1666	604	80	650	14500	
26.5R25	**	TL	22.00/3.0	70.6	26.9	113	94	40800	209A2
				1793	683	90	650	18500	
29.5R25	**	TL	25.00/3.5	75.6	30.6	122	94	49400	216A2
				1920	777	97	650	22400	
29.5R29	**	TL	25.00/3.5	79.1	31.5	129	94	52000	218A2
				2009	800	102	650	23600	





POWER MAXX+

Aggressive R4-style pattern designed to maximize traction in soft underfoot conditions. Ideal for use on graders, loaders, and earthmovers. Heavy duty bias construction maximizes traction and flotation. Wear and cut resistant tread compound. Self-cleaning tread design.

Engineered for:
Loaders \ Dump Trucks \ Graders



Size	PR	Type	Rim	O.D.	S.W	T.D.	Infl. P.	L.C.C.	Infl. P.	L.C.C.	L.I.
				in	in	32nds	psi	5 mph	psi	30 mph	
				mm	mm	mm	KPa	10 kph	KPa	50 kph	
15.5-25	12	TL	12.00/1.3	50.4	15.7	30	58	12300	36	7150	149B/168A2
				1280	399	24	400	5600	250	3250	
17.5-25	12	TL	14.00/1.5	53.3	17.2	31	51	13600	33	8050	153B/171A2
				1354	437	25	350	6150	225	3650	
	16			53.3	17.2	31	69	16100	44	9350	158B/177A2
				1354	437	25	475	7300	300	4250	
20.5-25	12	TL	17.00/2.0	58.5	20.6	35	36	14800	29	9900	160B/174A2
				1486	523	28	250	6700	200	4500	
	16			58.5	20.6	35	51	18200	40	12000	167B/181A2
				1486	523	28	350	8250	275	5450	



E3/L3



POWER MAXX+ HD

The Power Maxx+ HD features an aggressive tread design and excellent self-cleaning characteristics that provide exceptional traction in mud and dirt. It is ideally suited for articulated dump trucks and loaders.

Engineered for:
Loaders \ Dump Trucks



Size	PR	Type	Rim	O.D.	S.W	T.D.	Infl. P.	L.C.C.	Infl. P.	L.C.C.	L.I.
				in	in	32nds	psi	5 mph	psi	30 mph	
				mm	mm	mm	KPa	10 kph	KPa	50 kph	
15.5-25	12	TL	12.00/1.3	50.5	15.6	30	58	12300	36	7150	168A2/149B
				1282	396	24	400	5600	250	3250	
17.5-25	16	TL	14.00/1.5	52.8	17.2	33	69	16100	44	9350	177A2/158B
				1341	437	26	475	7300	300	4250	
	20			53.3	17.9	33	83	18200	58	11000	181A2/164B
				1354	455	26	575	8250	400	5000	
20.5-25	16	TL	17.00/2.0	59.6	20.7	37	51	18200	40	12000	181A2/167B
				1514	526	29	350	8250	275	5450	
	20			58.8	20.5	37	65	20900	47	13200	186A2/170B
				1493	521	29	450	9500	325	6000	
23.5-25	16	TL	19.50/2.5	63.2	23.9	43	44	20900	33	13600	186A2/171B
				1605	607	34	300	9500	225	6150	
	20			63.4	22.9	43	54	24000	44	16100	191A2/179B
				1610	582	34	375	10900	300	7300	
	28			63.7	23.5	43	83	30000	58	19300	199A2/183B
				1618	597	34	575	13600	400	8750	
26.5-25	20	TL	22.00/3.0	68.9	26.5	44	51	29100	36	18200	198A2/181B
				1750	673	35	350	13200	250	8250	
	24			68.9	26.5	44	58	30900	44	20400	200A2/185B
				1750	673	35	400	14000	300	9250	
	28			68.9	26.5	44	69	34200	51	22000	203A2/188B
				1750	673	35	475	15500	350	10000	



R4

SUPER SKID

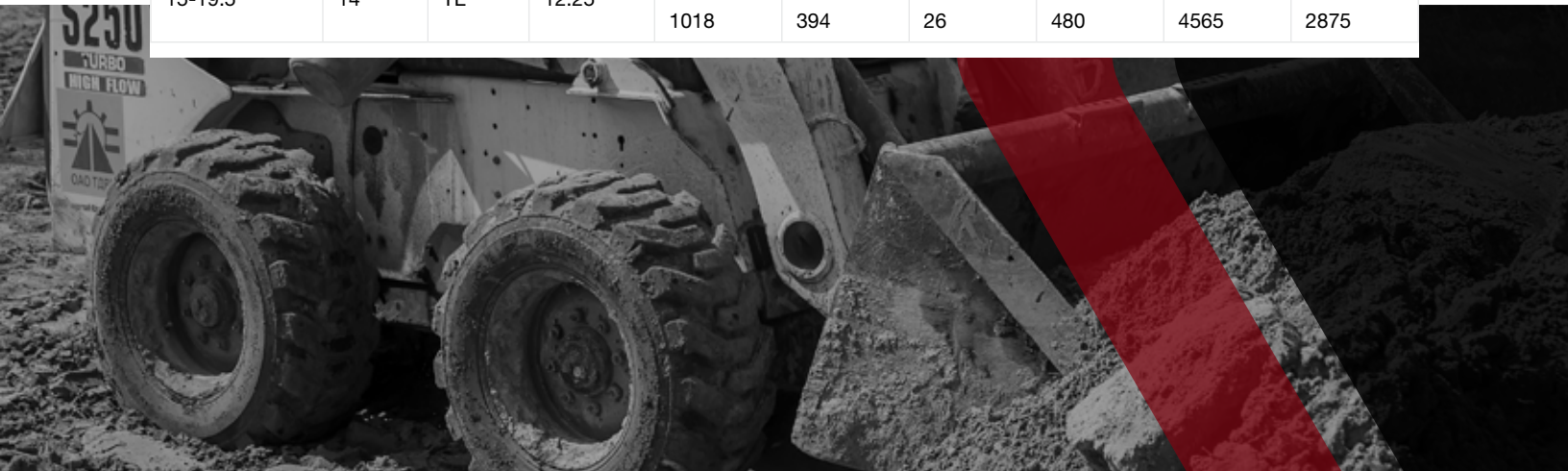
The Super Skid is the standard bearer of the DYNAMAMAXX family of skid steer tires with the versatile R4 bias ply. Proven to be one of the lowest cost-per-hour R4 tire, the Super Skid is built with a wear resistant compound, superior tread design, super sidewall and rim shield protector.

Engineered for:

Skid Steer \ Aerial Boom Lift \ Scissor Lifts \ Compact Tractors \ Mining \ Front Backhoe \ 3-Wheel Forklifts



Size	PR	Type	Rim	O.D.	S.W	T.D.	Infl. P.	L.C.C. (lbs/kg)	
				in	in	32nds	psi	5 mph	30 mph
				mm	mm	mm	KPa	10 kph	50 kph
27x8.50-15	8	TL	7.00	26.7	8.7	18	60	2875	1820
				678	221	14	415	1305	825
10-16.5	10	TL	8.25	30.2	10.6	21	75	4710	3200
				767	269	17	515	2135	1450
12-16.5	12	TL	9.75	32.7	13	26	80	6320	3980
				830	330	21	550	2865	1800
14-17.5	14	TL	10.50	36.2	14.1	33	80	8540	5380
				919	358	26	550	3875	2440
15-19.5	14	TL	12.25	40.1	15.5	33	70	10060	6340
				1018	394	26	480	4565	2875



R4



SUPER SKID+

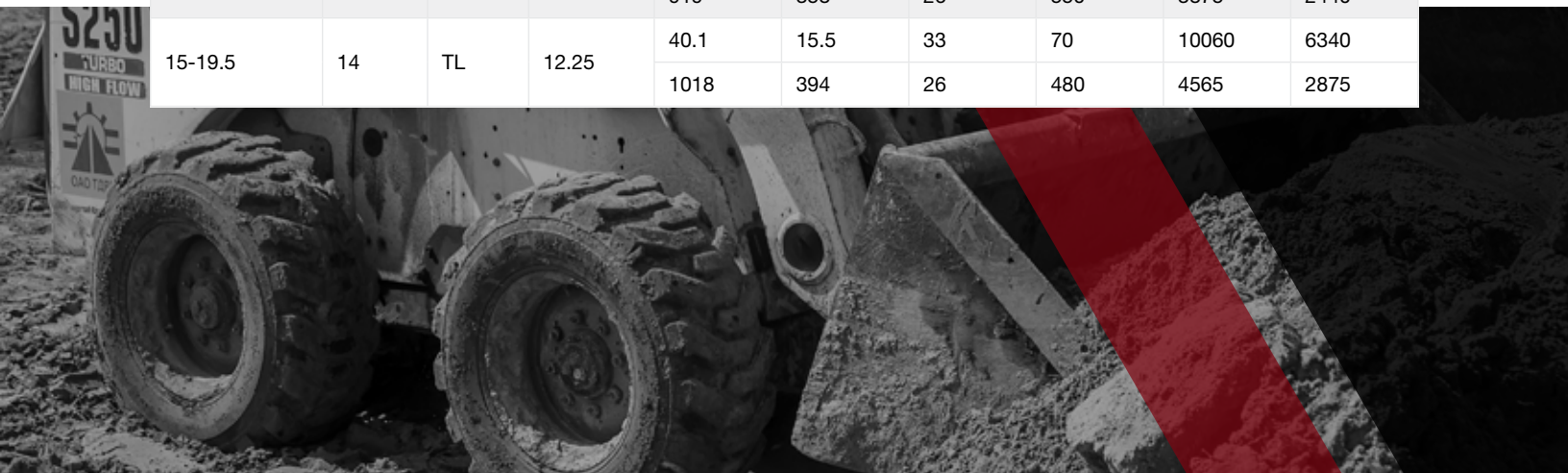
The Super Skid+ is the standard bearer of the DYNAMAMAXX family of skid steer tires. Super Skid+ tires are the most durable and versatile skid steer R4 bias ply tires in the DYNAMAMAXX skid steer range. It has been proven to be the lowest cost per hour R4 tire in the market, making it the standard by which all other skid steer tires are measured. This leading market position was earned over many years of service thanks to its wear resistant compound, superior tread design, super sidewall and rim shield protector.

Engineered for:

Skid Steer \ Aerial Boom Lift \ Scissor Lifts \ Compact Tractors \ Mining \ Front Backhoe \ 3-Wheel Forklifts



Size	PR	Type	Rim	O.D.	S.W	T.D.	Infl. P.	L.C.C. (lbs/kg)	
				in	in	32nds	psi	5 mph	30 mph
				mm	mm	mm	KPa	10 kph	50 kph
27x8.50-15	8	TL	7.00	26.7	8.7	18	60	2875	1820
				678	221	14	415	1305	825
10-16.5	10	TL	8.25	30.2	10.6	21	75	4710	3200
				767	269	17	515	2135	1450
12-16.5	12	TL	9.75	32.7	13	26	80	6320	3980
				830	330	21	550	2865	1800
14-17.5	14	TL	10.50	36.2	14.1	33	80	8540	5380
				919	358	26	550	3875	2440
15-19.5	14	TL	12.25	40.1	15.5	33	70	10060	6340
				1018	394	26	480	4565	2875



L5



SUPER SKID+ HD

The Super Skid+ HD has a unique tread pattern that allows it to operate in severe applications while providing superior self-cleaning characteristics. The Super Skid+ HD has a minimum tread depth of 44/32nds and a lug-to-void ratio of 68% solid to 32% void. Because of the deep tread depth and solid-to-void ratio, the Super Skid+ HD provides extraordinary hours of service and reduces downtime due to cuts and punctures.

Engineered for:
 Skid Steer \ Mining \ Front Backhoe \ Rear Backhoe



Size	PR	Type	Rim	O.D.	S.W	T.D.	Infl. P.	L.C.C. (lbs/kg)	
				in	in	32nds	psi	5 mph	10 mph
				mm	mm	mm	KPa	10 kph	15 kph
10-16.5	14	TL	8.25	31.3	11	44	105	5750	4540
				795	279	35	725	2610	2060
12-16.5	14	TL	9.75	33.0	13	44	90	6780	5355
				838	330	35	620	3075	2430





PAVE MAXX+

The Pave Maxx+ has been designed for optimum service in asphalt-spreader applications where low compression and long wear are necessary.

Engineered for:
Compactor \ Paving



Size	PR	Type	Rim	O.D.	S.W	T.D.	Infl. P.	L.C.C. (lbs/kg)	L.I.
				in	in	32nds	psi	5 mph	
				mm	mm	mm	KPa	10 kph	
14.00-20	12	TT	10.00W	47.8	14.6	15	58	12000	167A2
				1214	371	12	400	5450	
	14			47.8	14.9	15	69	13200	170A2
				1214	371	12	475	6000	
18.00-25	16	TL	10.00/1.5	60.7	18.1	20	58	22700	189A2
				1542	460	16	400	10300	
	20			60.7	18.1	20	69	25400	193A2
				1542	460	16	475	11500	
21.00-25	28	TL	15.00/3.0	66.4	22.2	22	75	36400	205A2
				1686	564	17	575	16500	



R-3



PAC MAXX+

The Pac Maxx+ is designed to provide excellent flotation characteristics and minimal soil disturbance on packer and hauling applications.

Engineered for:
Combines \ Spreaders \ Soil Compactor



Size	PR	Type	Rim	O.D.	S.W	T.D.	Infl. P.	L.C.C. (lbs/kg)		L.I.
				in	in	32nds	psi	5 mph	25 mph	
				mm	mm	mm	KPa	10 kph	40 kph	
23.1-26	12	TL	DW20	61.7	23.4	23	32	13400	8550	155A8
				1567	594	18	220	6100	3875	
28L-26	16	TL	DW25	62.6	28.2	34	36	17000	10500	162A8
				1590	716	27	250	7710	4750	



R1-W



SOIL TECH ELITE R1-W

The Soil Tech Elite R1-W features a highly versatile multi-angle tread design. The steep angle at the center of the lug provides long tread wear, exceptional mud clearing capability and smooth roading. The shallow angle at the shoulder delivers superior traction and improved hillside stability.

Engineered for:
Farm Tractors



Size	Alt Size	Type	Rim	O.D.	S.W.	T.D.	RC	Gross Flat Plate	Infl. P.	LCC (lbs)	LI/SS
				in	in	32nds	in	sq in	psi	25/30 mph	
				mm	mm	mm	mm	sq cm	KPa	40/50 kph	
280/85R24	11.2R24	TL	W10.00	42.9	11.4	52	128	128	23	2680	115A8/B
				1089	290	41	3251	827	160	1215	
320/85R24	12.4R24	TL	W11.00	45.7	12.6	53	136	158	23	3300	122A8/B
				1161	320	42	3454	1021	160	1500	
340/85R24	13.6R24	TL	W12.00	46.9	14.0	55	140	174	23	3640	125A8/B
				1191	356	44	3555	1123	160	1650	
380/85R24	14.9R24	TL	W12.00	49.6	15.4	55	148	206	23	4300	131A8/B
				1260	390	44	3759	1328	160	1950	
420/85R24	16.9R24	TL	W15.00	51.8	17.1	59	156	243	23	5080	137A8/B
				1315	434	47	3962	1566	160	2300	
340/85R28	13.6R28	TL	W12.00	51.0	13.9	53	152	185	23	3860	127A8/B
				1295	353	42	3860	1191	160	1750	
380/85R28	14.9R28	TL	W13.00	53.3	15.1	55	160	217	23	4540	133A8/B
				1354	383	44	4063	1403	160	2060	
420/85R28	16.9R28	TL	W15.00	56.0	17.6	59	168	156	23	5360	139A8/B
				1422	447	47	4266	1654	160	2430	
380/85R30	14.9R30	TL	W13.00	55.6	15.1	55	166	230	23	4800	135A8/B
				1412	383	44	4216	1484	160	2180	
420/85R30	16.9R30	TL	W15.00	58.3	17.3	64	174	264	23	5520	140A8/B
				1481	439	51	4419	1702	160	2500	
460/85R30	18.4R30	TL	W16.00	60.7	18.5	66	182	306	23	6400	145A8/B
				1542	470	52	4622	1974	160	2900	
420/85R34	16.9R34	TL	W15.00	62.0	17.4	65	186	280	23	5840	142A8/B
				1575	442	52	4724	1804	160	2650	
460/85R34	18.4R34	TL	W15.00	64.6	18.3	66	194	325	23	6800	147A8/B
				1641	465	52	4927	2094	160	3075	
420/85R38	16.9R38	TL	W16.00	65.9	17.9	66	198	295	23	6150	144A8/B
				1674	455	52	5028	1906	160	2800	
460/85R38	18.4R38	TL	W16.00	69.1	18.8	66	206	343	23	7150	149A8/B
				1755	477	52	5231	2213	160	3250	
520/85R38	20.8R38	TL	W18.00	73.0	21.4	68	218	409	23	8550	155A8/B
				1854	543	54	5536	2638	160	3785	
520/85R42	20.8R42	TL	W18.00	77.2	21.1	69	230	435	23	9100	157A8/B
				1961	536	55	5841	2808	160	4125	
650/65R38	-	TL	DW20B	71.3	25.5	73	213	438	23	9900	160A8/157D
				1810	648	58	5409	2825	160	4500	



IMP MAXX+



The IMP Maxx+ provides excellent performance for free-rolling wheels for use on harvesting machines, hay balers, bale racks, seeders, windrowers and fertilizer and manure spreaders.

Engineered for:
Hay Balers \ Bale Racks \ Seeders \ Fertilizer & Manure Spreaders

Size	PR	Type	Rim	O.D.	S.W	T.D.	Infl. P.	L.C.C. (lbs/kg)	LI/SS
				in	in	32nds	psi	30 mph	
				mm	mm	mm	KPa	50 kph	
9.5L-14	8	TL	7LB	29.1	9.6	9	44	2400	-
				739	245	7	300	1090	
11L-14	8	TL	7LB	29.6	10.7	7	36	2470	-
				753	271	9	250	1120	
7.60-15	8	TL	6LB	28.9	7.9	8	52	2090	-
				734	200	6	360	950	
9.5L-15	8	TL	8LB	30.2	10.6	9	44	2470	-
				768	269	7	300	1120	
11L-15	8	TL	8LB	30.7	11.2	9	36	2540	-
				779	285	7	250	1150	
12.5L-15	12	TL	10LB	32.5	13.2	9	52	3860	-
				826	335	7	360	1750	
12.5L-16	14	TL	10LB	33.3	12.8	13	56	4180	-
				846	324	10	390	1900	
16.5L-16.1	10	TL	W14C	40.2	16.9	14	36	5200	-
				1022	429	11	250	2360	
	14	TL	W14C	40.2	16.8	14	48	6400	-
				1022	427	11	330	2900	
21.5L-16.1	14	TL	W16C	44.0	21.5	18	36	7850	-
				1118	545	14	250	3550	
380/55R16.5	-	TL	12	33.4	14.7	10	73	4990	150A8/B
				848	373	12	500	2260	





IMP GRIP+

The IMP GRIP+ provides excellent performance for drive wheels on implements requiring high traction.

Engineered for:

Hay Balers \ Bale Racks \ Seeders \ Fertilizer & Manure Spreaders



Size	PR	Type	Rim	O.D.	S.W	T.D.	Infl. P.	L.C.C. (lbs/kg)
				in	in	32nds	psi	30 mph
				mm	mm	mm	KPa	50 kph
16.5L-16.1	10	TL	W14C	41.5	17.1	26	36	5200
				1054	434	20	250	2360
21.5L-16.1	14	TL	W16C	43.4	21.6	32	36	7850
				1103	548	25	250	3550





DYNAMAXX TIRE

300 Rosewood Drive, Suite 102, Danvers, MA 01923, USA
T:1-844-629-2662 / F:978-560-0624